

REGISTRATION FORM

GENERAL INFORMATION

I wish to attend the “**Effluent Sampling & Analysis for Mineral Industry**” from 26 - 27 February 2025.

Name:

I/C No:

Date of Birth:

IQM Membership No (if any):

Company Name:

Address:

.....

.....

Position Held:

Telephone: Fax:

Email:

Enclosed is RM..... payable to

“**Institute of Quarrying Malaysia Bhd**”

Online transaction can be made to:
A/C No: 014187 208342 Maybank
(kindly email bank transaction advise)

For further information contact:
INSTITUTE OF QUARRYING MALAYSIA BHD
No. 23, Jalan Utama 1/7,
Taman Perindustrian Puchong Utama (Puchong Perdana),
Seksyen 1, 47100 Puchong, Selangor DE, Malaysia.
Tel: 03-8062 4194/5 Fax: 03-8061 8258
Website: www.iqm.com.my Email: admin@iqm.com.my

Date:
Signature & Chop

(Please photocopy the Registration Form if required)

A. Registration Fee

Member : RM 1300
Non-Member : RM 1500
Government Officers : RM 1300

Early Bird
(before 14/02/2025)
RM 1100
RM 1350
RM 1100

HRD CORP CLAIMABLE COURSE

This is inclusive of course materials, morning and afternoon tea and lunch.

Group discount

A discount of five percent (5%) on the registration fee will be given to a group of 2 or more participants for the course.

B. Course Size

Participation is limited to not more than 30 persons and will be based on first-come first-served basis.

C. Accommodation

You may arrange your accommodation with the following hotels:

- 1) Sri Indar Hotel, Parit Buntar Tel : 05-7166999
- 2) O&G Hotel, Parit Buntar Tel : 010-6606828/
05-7102626

D. Cancellation

A deduction of 50% of the Registration Fee will be made being handling charges for cancellation after confirmation by phone or facsimile. No refund shall be made for cancellation after the closing date of the course. A substitute is accepted.

E. Closing Date

The closing date for registration is 14 February 2025.

NOTE: Cheque enclosed with the Registration Form does not necessarily mean that you have been automatically accepted until official confirmation by the Institute of Quarrying Malaysia Bhd.

IQM Continuous Professional Development Programme

HRD CORP CLAIMABLE COURSE



EFFLUENT SAMPLING & ANALYSIS
FOR MINERAL INDUSTRY 2025
CPD HRS: 12
Course Date: 26 - 27 February 2025

Organised by:



Supported by:



&



DEPARTMENT OF MINERALS & GEOSCIENCE MALAYSIA

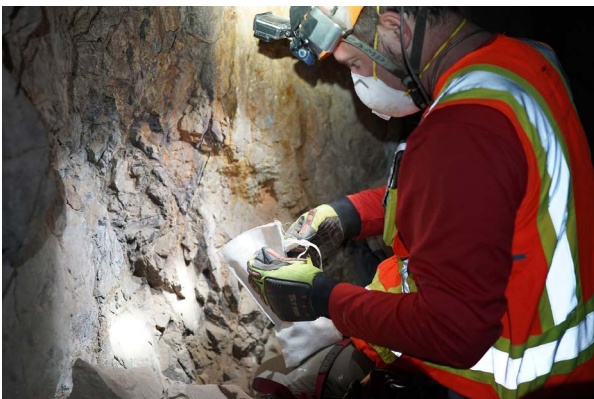
UNIVERSITI SAINS MALAYSIA

to be held at

School of Materials and Mineral Resources Engineering
Engineering Campus, Universiti Sains Malaysia
14300 Nibong Tebal, Seberang Perai Selatan,
Pulau Pinang. Tel : 04-5995999



The awareness of ESG in the mining and quarrying industry today is gaining more attention and becoming a priority among stakeholders. Among them are enforcement measures to instruct self-regulatory in reporting compliance with license conditions such as submission of water quality monitoring reports periodically to all relevant technical departments. Industry players need to train and appoint competent personnel to carry out these tasks in accordance with the requirements of the Mineral Development (Effluent) Regulations 2016 as well as Environmental Quality (Industrial Effluent) Regulations 2009. The JMG has released effluent sampling method guidelines that can be used as a reference source. However, physical guidance and training is very necessary among industry players since proper effluent sampling must be carried out in accordance with established procedures and methods to ensure that the results of the data obtained are accurate, quality and integrity. Some of the procedures can be carried out in-house using handheld equipment.



This is a 2-day course that consists of 1½ days lecture on introduction to legislation and guidelines related to sampling methods and ½ day focus on demonstration and hands-on handling of the equipment where all participants will have exposure of handling the handheld multiparameter and chemicals apparatus and also gain experience in handling the preservation process of sample and other several procedures before it is complete to be sent to the accredited laboratory. Next, after carrying out a simulation of the delivery and receipt of samples to the laboratory, participants will be given examples of results that will be discussed on how to analyse and interpret data in preparing a full report.

WHO SHOULD ATTEND

The main purpose of the course is to give some exposure, knowledge and enhance the competency in effluent sampling activities and data analysis that's received from the laboratory. Apart from the need to comply with legal requirements, personnel from mining or quarrying industry are recommended to attend this course in order to gain knowledge on how to carry out the sampling activities and interpreting the results. The knowledge may at least add more visualization and understanding and be able to implement the self-regulatory of water quality monitoring and reporting. In addition to getting high reliable and integrity data, miners or quarry operator can also lower the operating costs compared to appointing a third party to carry out the sampling and analysis.

HANIZAM SHAH BIN SAIDIN

Hanizam Shah Bin Saidin graduated from Universiti Sains Malaysia, Pulau Pinang in Bachelor of Mineral Resources Engineering and in 2010, he pursued his study in Master of Science in Mineral Resources Engineering at the same university specialized in pyrometallurgical study. In the year 2013, he joined JMG Malaysia and started his service at JMG Perak and was posted to Kelantan and currently he works as Senior Assistant Director of Quarry and Mines Unit at JMG Pahang. He is active as an internal trainer for environmental training programmes such as water quality control and monitoring, and rehabilitation course.

Apart from that, he is an Industrial lecturer at University Malaysia Pahang since 2018 for the subject of Mine Rehabilitation under Master of Science in Mining with Mineral Technology Programme. He is also certified as Malaysian Certified Inspector Sediment and Erosion Control (MY-CISEC), a member of Institute of Mineral Engineering, Malaysia (IME) and a HRD Corp TTT Certified Trainer.

